

A TRADITION OF INNOVATION



WE GENERATE VALUE

Since our foundation over 80 years ago we have been intensively occupied with two things: Light & Metal.

Our experience gained over four generations allows us to offer you high quality products in four business sectors. With FISCHER you are choosing a strong partner for all your light and metal requirements. We live for our values and create value for you and your customers.

Technology changes our lives. Progress is not possible without innovation. We possess the knowledge needed to keep up with technological developments. We promote unconventional thinking and new ideas. With our optimism, dynamism and sense of responsibility we want our customers to be enthusiastic and not just satisfied – we create products with more value!

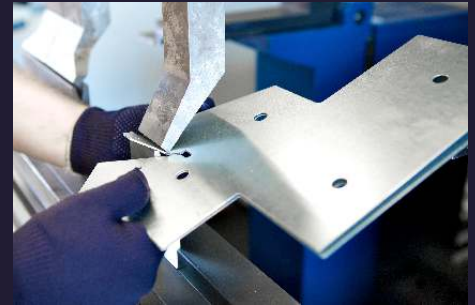
FISCHER Licht & Metall is one of the largest manufacturers of illuminated advertising and metal components in Europe. A creative team of over 200 employees plans, develops and manufactures innovative products in four different business sectors. Our knowledge in these sectors gives our customers a competitive advantage.

ADVERTISING
INSTALLATIONS

METAL
COMPONENTS

LIGHTING
SYSTEMS

SOLAR
TECHNOLOGY



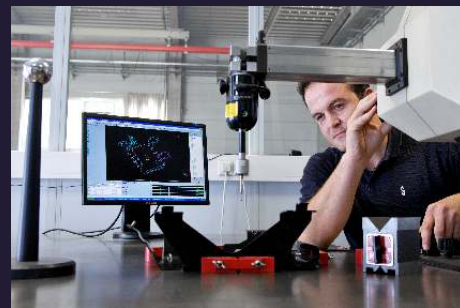


ADVERTISING INSTALLATIONS

As one of the largest manufacturers of illuminated advertising in Europe we supply only skilled technical companies in the advertising industry. We manufacture high quality advertising installations, from the smallest letters to 50 metre high advertising towers. FISCHER Licht & Metall works professionally in a total of 7 different trades, with a high degree of automation in a state of the art machine park. This wide range of interdisciplinary skills is necessary in order to design and manufacture perfect advertising installations. FISCHER illuminated advertising installations give your customers an attractive presence with illuminated letters and signs, banners and pylons, advertising towers and large-scale installations. Our spectrum of services also includes the full implementation of imaginative works from internationally renowned lighting artists. We naturally also possess all the legally prescribed manufacturer qualifications required for the manufacture of steel and aluminium structures.

METAL COMPONENTS

FISCHER Licht & Metall manufacture high quality products taking advantage of the limitless possibilities offered by sheet metal. We offer our customers high-tech industrial production in a state of the art machine park. We work closely with our customers, starting in the design phase, to ensure an efficient process chain through the entire project. Our top technical experts develop the best product solutions for our customers, using CNC metal parts, punched and stamped elements, welded components and special system constructions. We supply globally active companies in the automotive, electrical, machine construction and lighting sectors as well as manufacturers of medical devices. FISCHER possesses all the legally prescribed manufacturer qualifications required for the manufacture of steel and aluminium structures. We are, of course, also certified to DIN EN ISO 9001:2008 – we are committed to ensuring the final quality of your products.



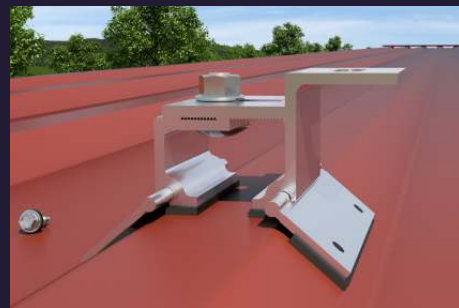


LIGHTING SYSTEMS

FISCHER has been producing public lighting systems for over 40 years. These are permanent installations in railway stations, underground stations, urban railway stations, congress centres, shopping centres and public spaces. We create aesthetically pleasing lighting solutions through creative dialogue with architects and planning offices. Our services include custom open air installations using laser technology, 3D constructions, in-house production using state of the art machines and expertly executed efficient installation. FISCHER is certified to DIN EN ISO 9001:2008 and possesses all the legally prescribed manufacturer qualifications required for the manufacture of steel and aluminium structures. Safety in public spaces is our highest commandment.

SOLAR TECHNOLOGY

For over 15 years, we have been developing and manufacturing substructures for the photovoltaic industry. Complex modules that comply with strict requirements are part of our day-to-day business. We demand the highest standards of quality throughout all our production processes. We are certified according to the DIN EN ISO 9001:2008 standard and rigorously adhere to the Zero Defects quality control program. Our PV flat roof systems are the only product on the European market having a structural type analysis verified by the LGA Testing Authority for Structural Safety. This type approval has the advantage that the respective building approval authorities are not required to perform an additional static loading analysis. FISCHER SOLARTECHNIK is the right decision when selecting a manufacturer of PV system substructures. We can find the right solution for any situation on any roof.



FISCHER Licht & Metall GmbH & Co. KG

Phone +49 9185 921-0

Fax +49 9185 921-110

Email info@fischer-lum.de

Rocksdorfer Straße 10

92360 Mühlhausen, Germany

www.fischer-lum.de